

Baffin Bay Symposium

June 28, 2016

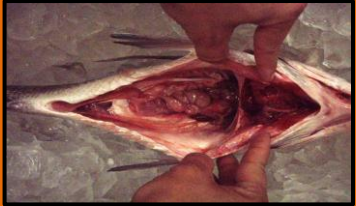
Tying it together and
looking ahead



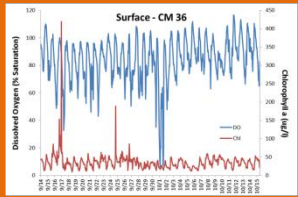
Rae Mooney

Coastal Bend Bays & Estuaries Program

Tying it together



Black drum emaciation event likely caused by decrease in food availability and exceptionally large populations of drum



Decline in benthic food availability linked to salinity, dissolved oxygen

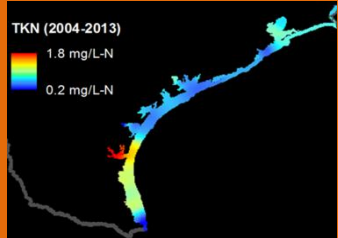


Baffin Bay Black Drum are staying in Baffin Bay

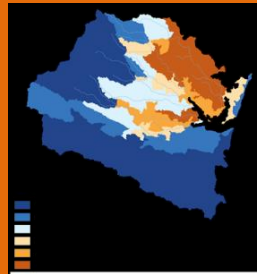


Black Drum are eating variety of organisms and the benthic populations have increased since 2012 event

Tying it together



Longer-term decline in water quality correspond with increased N & P inputs



Organic nutrients likely important for brown tide blooms



Natural variability in water quality linked to rainfall – but increased N & P more significant

Looking Ahead & Next Steps

A Watershed Protection Plan ...

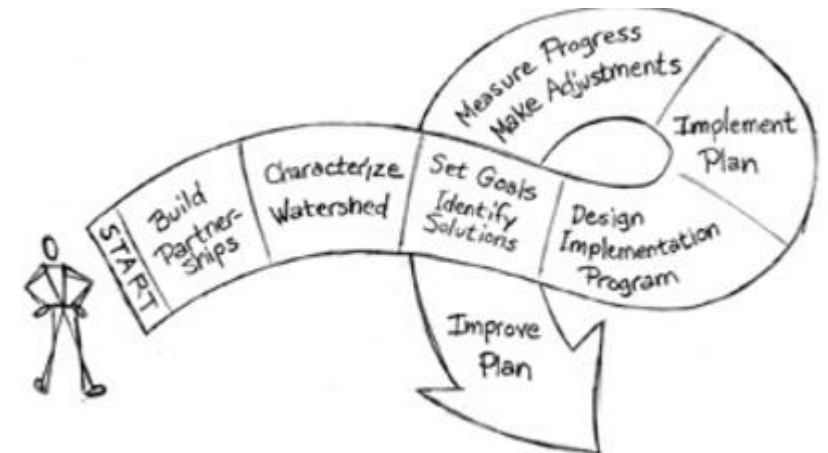
is locally driven

addresses water
quality problems

benefits the community

prioritizes actions & projects

opens up funding
opportunities



Thank you for attending!

Please contact me if you are interested in
receiving future updates



Rae Mooney

rmooney@cbbep.org

Coastal Bend Bays & Estuaries Program