



## **Nueces Delta Environmental Monitoring Project**

Final Report

Publication CBBEP – 148

Project Number – 2111

August 2021

Prepared by:

Devon Steffan

Research Project Administrator

and

James Rizzo

Assistant Director of Operations

Texas A&M University – Corpus Christi – Conrad Blucher Institute

6300 Ocean Dr, Corpus Christi, TX 78412

Phone: 361.825.3846

E-mail: [devon.steffan@tamucc.edu](mailto:devon.steffan@tamucc.edu)

Submitted to:

**Coastal Bend Bays & Estuaries Program**

615 N. Upper Broadway, Suite 1200

Corpus Christi, TX 78401

The views expressed herein are those of the authors and do not necessarily reflect the views of CBBEP or other organizations that may have provided funding for this project.

**NUECES DELTA ENVIRONMENTAL  
MONITORING PROJECT  
#2111**

**Draft Final Report  
Reporting period:  
September 1, 2020 to August 31, 2021**

Submitted By:  
Conrad Blucher Institute for Surveying and Science  
Texas A&M University-Corpus Christi  
6300 Ocean Drive, Corpus Christi, TX 78412

Submitted To:  
Adrien Hilmy  
Coastal Bend Bays & Estuaries Program  
615 N Upper Broadway, Suite 1200  
Corpus Christi, TX 78401

## TABLE OF CONTENTS

	<u>Page</u>
Introduction.....	2
Methods.....	4
Results and Discussion.....	7
Conclusions.....	12
References.....	13

### List of Tables

Table 1.	Capacity of the Rincon Bayou Pipeline.....	4
Table 2.	Rincon Bayou Pipeline pumping events to date.....	7
Table 3.	Total rainfall per year for NUDEWX and CRP.....	7

### List of Figures

Figure 1.	Nueces Delta, Corpus Christi, Texas, USA.....	4
Figure 2.	Pictures of Rincon Bayou Pipeline intake and outfall.....	5
Figure 3.	Location of salinity monitoring stations.....	6
Figure 4.	Drought conditions throughout the state of Texas.....	8
Figure 5.	NUDE2 salinity and pumping events for current year.....	9
Figure 6 (A&B)	Pumping events 77 and 78 in 2020.....	9
Figure 7.	Individual pumping events for 2021.....	11
Figure 8.	Salinity and tidal variations at NUEBAY and NUDE2 during a pumping event.	12

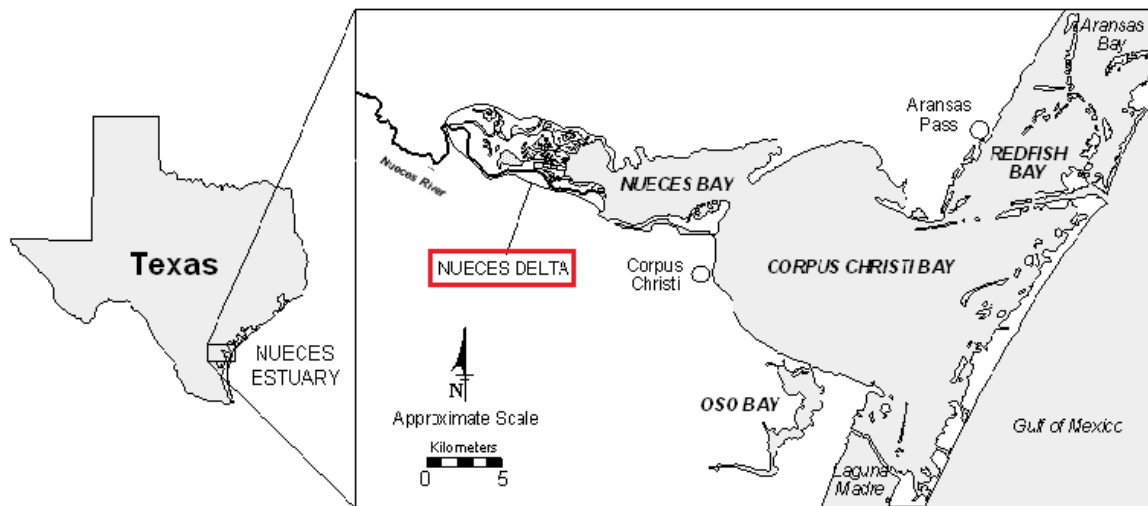
# Nueces Delta Salinity Effects from Pumping Freshwater into the Rincon Bayou

## INTRODUCTION

This project's focus is monitoring the hydrological effects sourced from the Rincon Bayou Pipeline (RBP) in the Nueces Delta near Corpus Christi, Texas (**Figure 1**). This report will highlight trends in salinity changes throughout pumping events and provide a detailed look at the effects seen during the 2020-2021 sampling year (September 1, 2020 to August 31, 2021). The results of this study are used for the continual adaptation of a water management plan that will help water managers make decisions on quantity, timing, and duration of pipeline inflows that are most productive and important to the ecology of the Nueces Delta.

The Nueces Delta has been a scientific research focus due to its hypersaline condition (Matthews and Mueller 1987; Whitledge and Stockwell 1995; Montagna et al. 2002; Palmer et al. 2002; Montagna et al. 2009; Hill et al. 2011; Nueces BBEST 2011; Nueces BBASC 2012; Hodges et al. 2012). Because of watershed impoundments, riverbank modifications, and increased urbanization along the Nueces River, the Nueces Delta is no longer connected to the Nueces River, except through the Nueces River overflow channel that was permanently opened in 2001. Because of these factors, the majority of freshwater flow is diverted from the river directly to the bay, bypassing the delta. The only natural means of freshwater flow through the Nueces Delta is during severe flooding events or local heavy rainfall causing the flow to over bank into the delta (BOR 2000; Pulich et al. 2002; Hill et al. 2011). Decreased inflows into the delta and prolonged Texas droughts have caused frequent hypersaline conditions in the Nueces Delta. Freshwater inundation within the Nueces Delta over the past 30 years has been insufficient in volume and distribution to maintain a healthy marsh, the lack of sediment loading in the system is leading to the delta front eroding into Nueces Bay, the marsh plants are under stress, and the connectivity of aquatic habitat is threatened (Hodges et al. 2012).

In the 1990's, studies found these hypersaline conditions could harm the ecological and biological processes of the marsh and degrade the overall health of the Nueces Estuary. This impact evoked the state of Texas to develop an inflow criterion for freshwater inflows (Dunton and Alexander 2000; Montagna et al. 2002; Palmer et al. 2002). The resultant 2001 Agreed Order, from the Texas Commission on Environmental Quality (TCEQ), requires the City of Corpus Christi (City) to provide no less than 151,000 acre-feet (186,255,757 m<sup>3</sup>) per year to the Nueces Estuary (TCEQ 1995). Each month the City is required to "pass through" inflow to the Nueces Estuary equal to the measured instream flow into the Choke Canyon Reservoir/Lake Corpus Christi Reservoir System up to a target amount (TCEQ 1995). The target amount varies by month and is calculated based on the combined storage volume of the Reservoir System. The City may receive credits for excess flow from the previous month or from relief credits based on salinity measured at the SALT03 monitoring station in Nueces Bay (Montagna et al. 2009).



**Figure 1. Location of the Nueces Delta within Texas and the Nueces Watershed.**

To efficiently deliver freshwater to the Nueces Delta, the City built the Rincon Bayou pump station and pipeline (RBP) to divert up to the first 3,000 acre-feet (3,700,446 m<sup>3</sup>) of required “pass throughs” to the upper Rincon Bayou in the Nueces Delta. The RBP became operational in November 2007. The RBP pump station includes three 350 horsepower mixed flow submersible pumps capable of moving up to 60,000 gallons per minute with all three pumps operating (**Table 1; Figure 2**). The number of days to deliver a given volume of freshwater through the RBP depends on the number of pumps used.

**Table 1. Capacity of the Rincon Bayou Pipeline**

	Number of Rincon Bayou Pumps in Operation		
	1	2	3
Flow, gallons/minute	28,000	46,000	60,000
Flow, cubic feet/second	62	102	134
Flow, acre-feet/day	124	203	265
Total kW	230	455	675

This project’s principal objective is to maintain environmental data collection stations measuring water quality parameters in Nueces Bay as a result of the freshwater releases of the RBP. The data collected during this period is made public and available to CBBEP personnel in support of the Rincon Bayou Pipeline Management Plan which helps water managers make decisions on quantity, timing, and duration of pipeline inflow events that are most productive and significant to the ecology of



A)



B)

*Figure 2. View of RBP pumping facilities depicting A) the intake pumps located on the Nueces River above the Calallen Dam and B) the pipeline outfall in the Rincon Bayou. Photos taken by Jace Tunnell.*

the Nueces Delta. This report focuses on identifying the RBP freshwater inflows events in the Nueces Delta and provides data collected between September 1, 2020 and August 31, 2021.

## **METHODS**

The Coastal Bend Bays & Estuaries Program (CBBEP) contracts this salinity-monitoring project to the Conrad Blucher Institute for Surveying and Science (CBI) at Texas A&M University - Corpus Christi (TAMU-CC). This project includes three environmental data collection stations. Nueces Bay Weather Station (NUDEX), Nueces Delta 2 (NUDE 2), and the Nueces Bay Water

Level (NUDEBAY), are all monitoring various conditions within the Nueces River Delta and bay. (Figure 3)

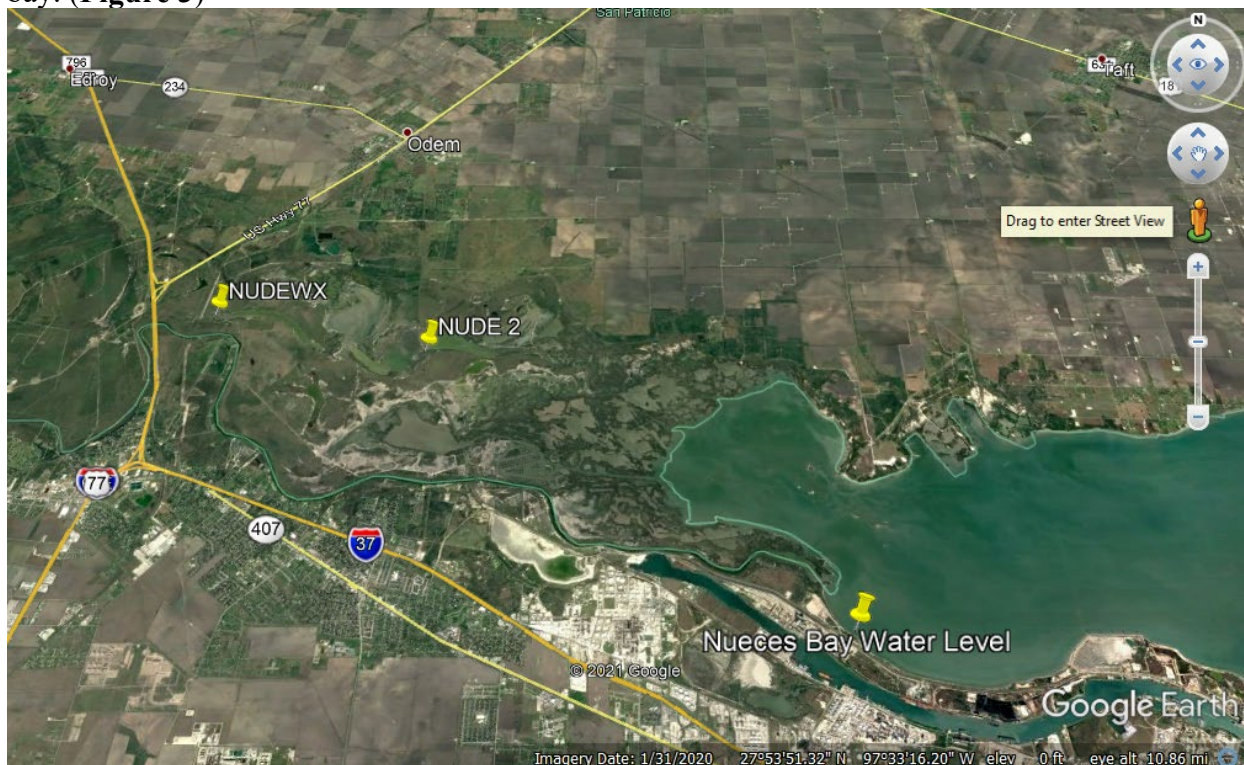


Figure 3. Map of the three environmental monitoring stations (NUDE2, NUDEWX, and NUDEBAY).

The Nueces Delta Weather Station (NUDEWX) is located on Rincon Bayou downstream from the RBP outfall (27.897582°N, -97.616524°W). The station measures wind speed (m/s), wind direction (°), barometric pressure (mbar), precipitation (mm), relative humidity (%), and solar radiation (cal/cm<sup>2</sup>/min). The CBI performs a monthly maintenance to NUDEWX including a rain gauge calibration check. NUDE2 is in the middle reach of Rincon Bayou measures conductivity and water temperature while the

Nueces Bay Water Level station measures water level (m), wind speed (m/s), wind gusts (m/s), wind direction (°), and barometric pressure (mbar). NUDEBAY 185 is serviced annually following standards established by NOAA CO-OPS (<http://tidesandcurrents.noaa.gov/>).

The NUDE 2 uses a of Hydrolab<sup>®</sup> CMS5 water quality datasonde interfaced with cellular IP modem and is serviced on a monthly basis. The station is polled by an automated computer program designed and implemented by the Information Technology staff at CBI. Data is stored in CBI's database and available via the project webpage at <http://cbi.tamucc.edu/cbi/data/>.

The Hydrolab<sup>®</sup> CMS5, at NUDE 2, measures water quality parameters: water temperature (°C), specific conductance (µS/cm), and salinity (ppt). Activities are performed in accordance with the Quality Assurance Project Plan (QAPP).

## RESULTS AND DISCUSSION

From September 2020 to the August 2021, there were five (5) pumping events totaling 12,830 acre-feet (Figures 5,6 A/B, &7). Note that *Figure 7* identify' s pumping events 79, 80, & 81 as they occurred with relatively small breaks in time.

**Table 2. 2020-2021 Rincon Bayou Pumping Events**

Year	Pumping Event	Dates of Event	Duration (days)	Avg. water level (m above MSL)	Acre-Foot Pumped
2020-2021	77	Sep. 16 to Sep. 30, 2020	15	0.44	2,848
	78	Oct. 01 to Oct. 02, 2020	2	0.24	288
	79	May 18 to May 26, 2021	8	0.48	1,370
	80	June 04 to June 30, 2021	26	0.21	6,028
	81	July 1 to July 10, 2021	10	0.44	2,296

During this reporting period (2020-2021), the NUDEWX at 27°53'50.47"N, 97°36'58.73"W station measured 37.3 in. of rainfall while the National Weather Service (National Weather Service 2018) at Corpus Christi International Airport (CRP) at 27°46'22.43"N, 97°30'8.47"W measured 29.23 in. (Table 3). Despite the 11-mile separation, both locations recorded similar rainfall events and were representative of the general meteorological conditions in the Nueces Delta watershed.

**Table 3  
Total rainfall per 2020-2021 sampling year for NUDEWX and CRP.**

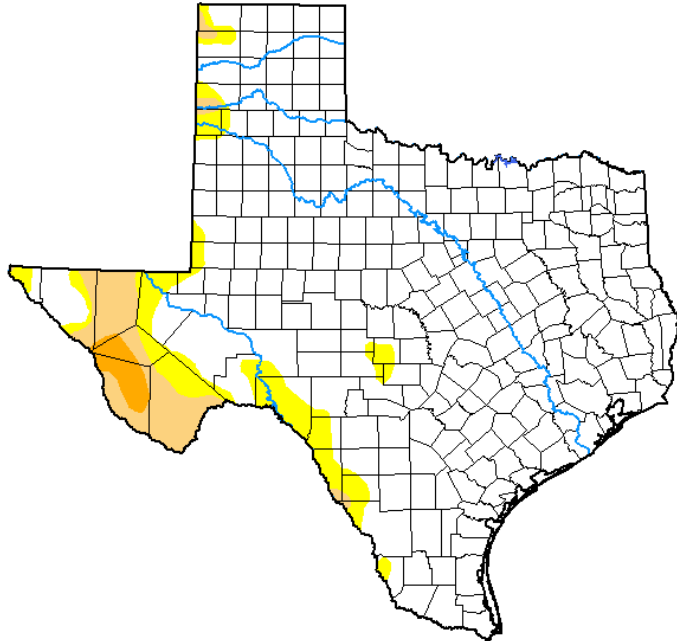
2020-2021	
NUDEWX	37.3 in
CRP	29.23 in

The 2020-2021 sampling period 29.23 in (74.24 cm) of rainfall was recorded at CRP, and 37.3 in (94.742 cm) at NUDEWX.



**U.S. Drought Monitor  
Texas**

**July 6, 2021**  
(Released Thursday, Jul. 8, 2021)  
Valid 8 a.m. EDT



Drought Conditions (Percent Area)

	None	D0-D4	D1-D4	D2-D4	D3-D4	D4
<b>Current</b>	87.07	12.93	5.98	1.17	0.00	0.00
<b>Last Week</b> <small>06-29-2021</small>	81.56	18.44	9.00	5.67	1.17	0.00
<b>3 Months Ago</b> <small>04-06-2021</small>	8.55	91.45	74.45	38.46	23.57	8.53
<b>Start of Calendar Year</b> <small>12-29-2020</small>	8.80	91.20	81.11	50.33	30.09	13.03
<b>Start of Water Year</b> <small>09-29-2020</small>	57.35	42.65	31.96	20.91	12.02	3.29
<b>One Year Ago</b> <small>07-07-2020</small>	46.84	53.16	24.84	8.50	2.23	0.00

Intensity:

- None
- D0 Abnormally Dry
- D1 Moderate Drought
- D2 Severe Drought
- D3 Extreme Drought
- D4 Exceptional Drought

The Drought Monitor focuses on broad-scale conditions. Local conditions may vary. For more information on the Drought Monitor, go to <https://droughtmonitor.unl.edu/About.aspx>

Author:

Deborah Bathke  
National Drought Mitigation Center



[droughtmonitor.unl.edu](https://droughtmonitor.unl.edu)

Figure 4. Drought condition figure throughout the state of Texas 2021, which will generally be representative of drought, conditions throughout the 2020-2021 sampling year.

Reservoir levels increased significantly in 2021 due to the significant rainfall events in 2021. The effects to the systems were increased reservoir levels with extended periods of low salinity values in Nueces Bay. As of September 2, 2021, Lake Corpus Christi reservoir level was 90.2 % of capacity while Choke Canyon reservoir was 48.4 for a combined level of 60.0%.

Salinities recorded at NUDE2 generally dropped shortly after a pumping event was initiated and gradually increased after the end of a pumping event (Figure 6). During pumping event 77, the salinity at NUDE2 slowly fell from approximately 34 PSU to under 5 PSU and lasted approximately 19 days after initiating the pumps. During pumping event 78, the salinity at NUDE2 did not significantly change.

### NUDE02 Salinity and Pumping Events (September 2020–August 2021)

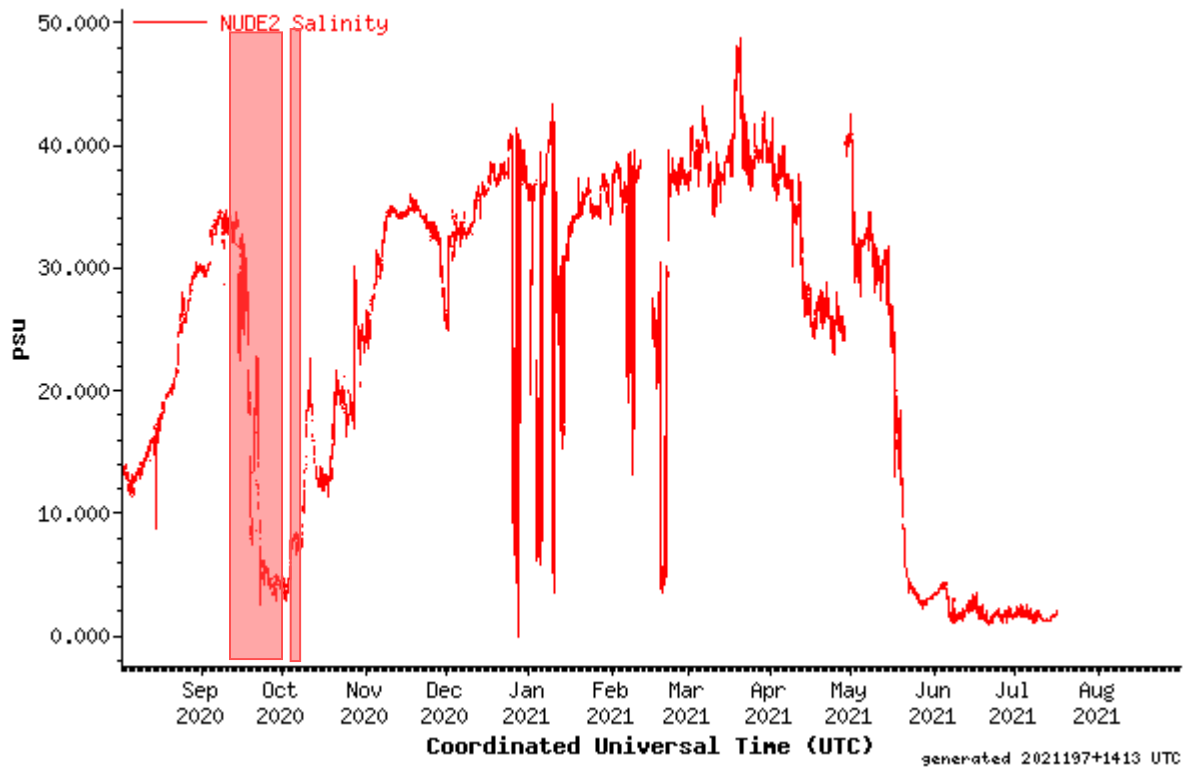
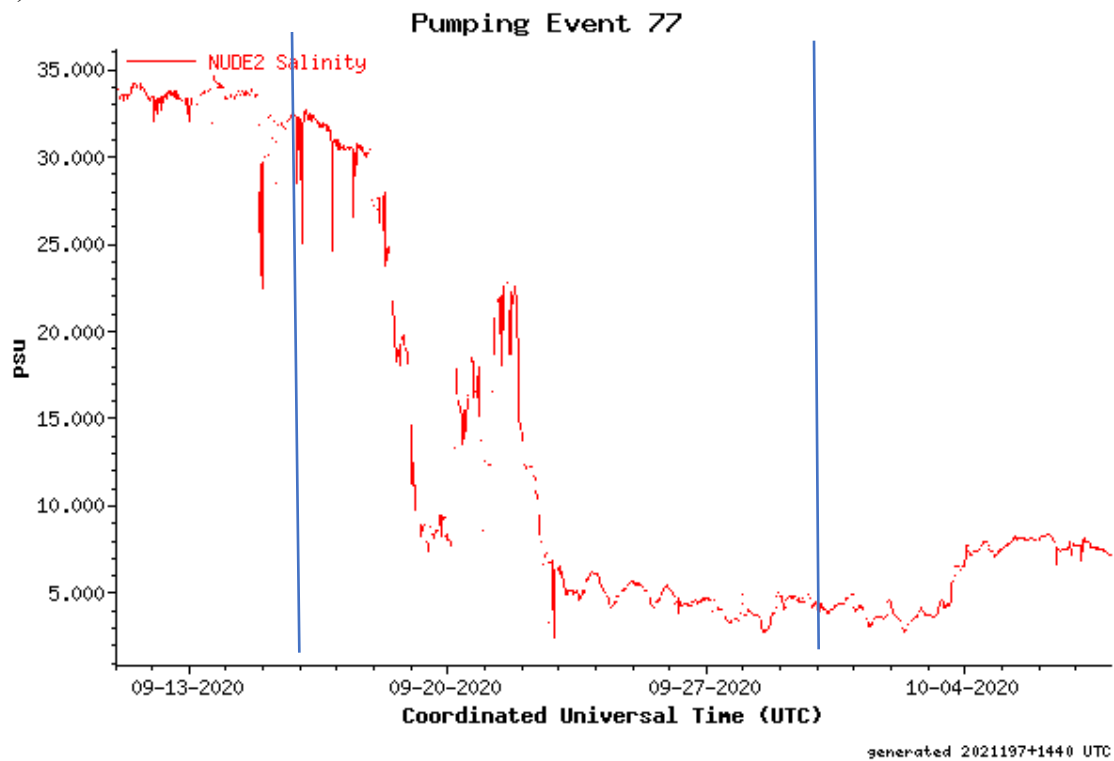


Figure 5. NUDE2 salinity during the 2020-2021 77 & 78 pumping events. .

A)



B)

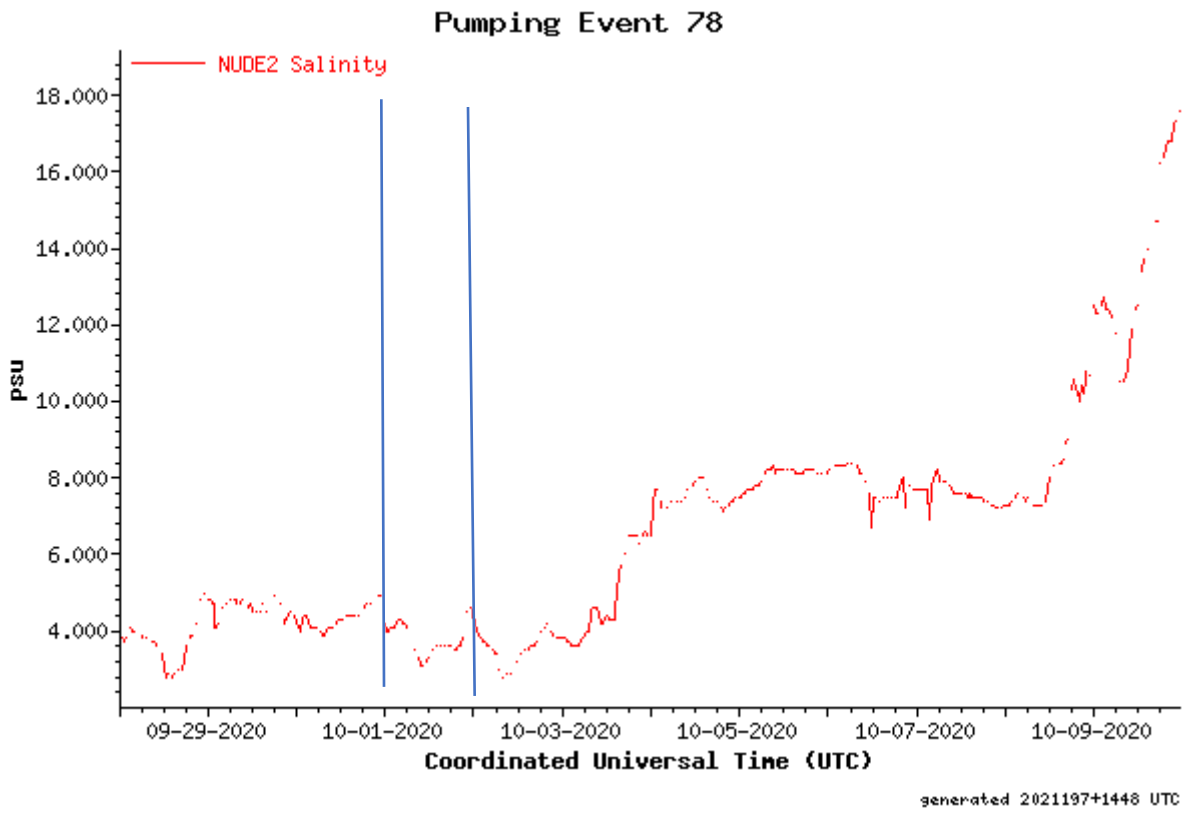


Figure 6A. Pumping event 77, September 16 -30, 2020  
Figure 6B. Pumping event 78, October 1-2, 2020.

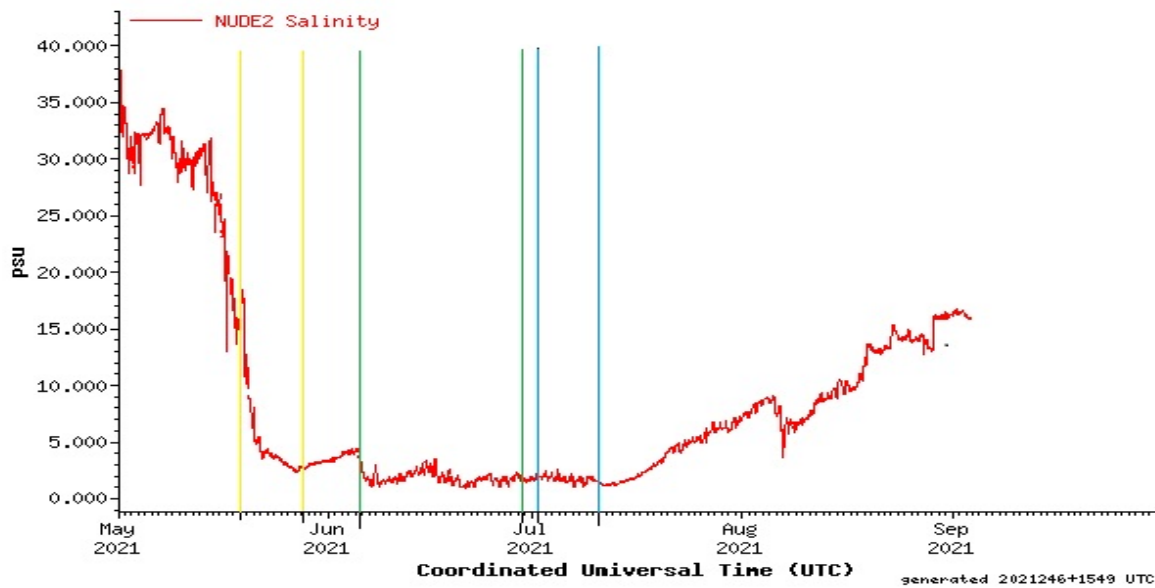
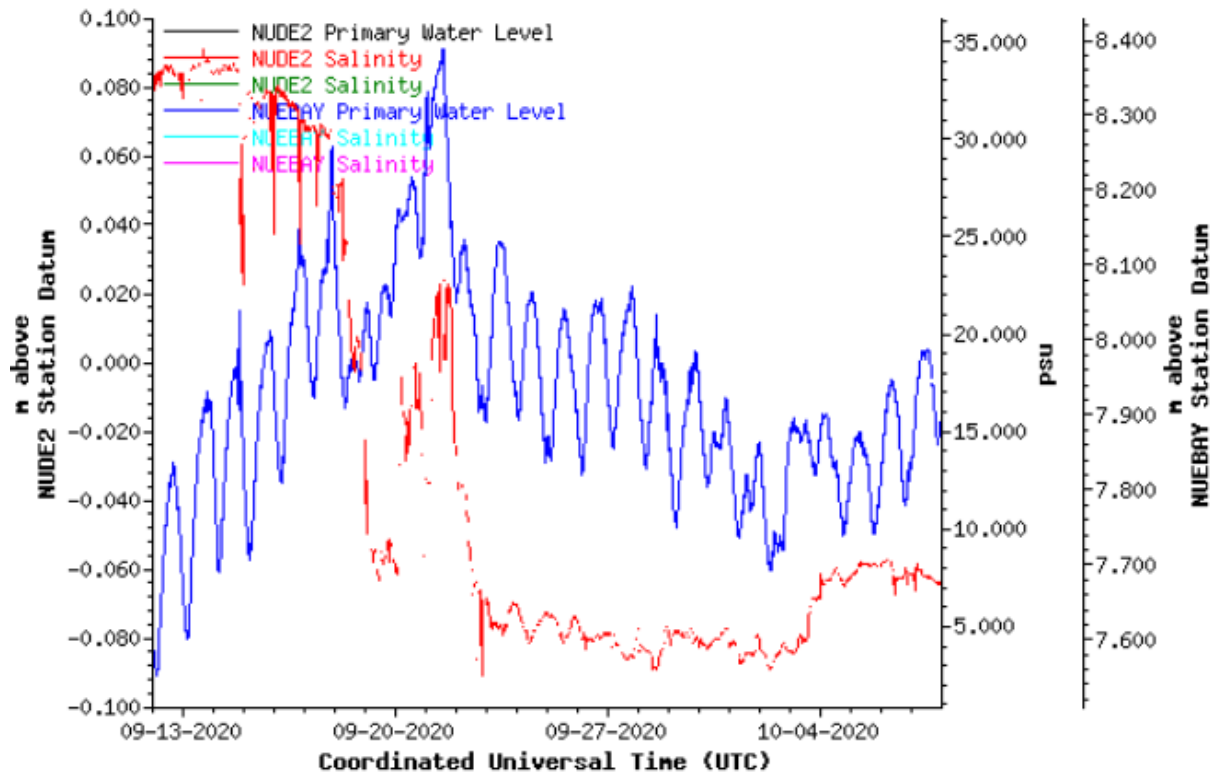


Figure 7. Individual pumping events during the 2021 year. Vertical lines represent the start (left line) and end (right line) of pumping events.

In addition to freshwater inflows, the salinities in the Nueces Delta are also influenced by tidal variations which will cause movements of fresh, and saltwater separated by a halocline (Adams and Tunnell 2010). As the tide rises, saltwater nearer to the bay is forced further back into the delta, and as the tide lowers, freshwater located further away from the bay is pulled closer to the bay.

Diurnal tidal variation appeared to have little to no effect on salinities at NUDE2 during pumping events. Wind direction, wind velocity, evaporation and rainfall during pumping events have all had an effect on hydrodynamics in the Nueces Delta (Adams and Tunnell 2010).

Pumping event 78 did not seem to have a significant effect on salinity levels at the NUDE2 monitoring station. This is likely due to the timing and quantity of the pumping event one day after the previous event.



generated 2021197+1506 UTC

Figure 8. NUDE2 salinity (red line) and NUEBAY water level (blue line) during pumping event 77.

## CONCLUSIONS

From September 2020 to August 2021, 12,830 ac. ft. of water was pumped via the RBP during five (5) events. Significant rainfall amounts in 2021 resulted in large amounts of fresh water being released into the delta and bay dropping salinity levels drastically. As of the date of this report, salinity at NUDE 2 was being reported at 16.0 psu.

## REFERENCES

Adams, J.S. and J.W. Tunnell. 2010. Rincon Bayou Salinity Monitoring. Final Report submitted to the Coastal Bend Bays & Estuaries Program for project number 0921, Coastal Bend Bays & Estuaries Program, Publication No. CBBEP-66, 18 pp.

Bureau of Reclamation (BOR). 2000. Concluding Report: Rincon Bayou Demonstration Project. Volume II: Findings. United States Department of the Interior, Bureau of Reclamation, Oklahoma-Texas Area Office, Austin, Texas.

Dunton, K. H. and H. D. Alexander. 2000. Chapter Six: Vegetation Communities. In Bureau of Reclamation. Concluding Report: Rincon Bayou Demonstration Project. Volume II: Findings. United States Department of the Interior, Bureau of Reclamation, Oklahoma – Texas Area Office, Austin, Texas.

Hill, E. M., B. A. Nicolau, and P. V. Zimba. 2011. Habitat Management History of the Nueces Estuary, Texas, USA. *Texas Water Journal* (2)1: 97-111.

Hodges, B.R., K.H. Dunton, P.A. Montagna, and G.H. Ward. 2012. Nueces Delta Restoration Study. Final Report to the Coastal Bend Bays & Estuaries Program, Project 1001. Publication No. 84. Corpus Christi, Texas. 133 pp.

Matthews G. A. and A. J. Mueller. 1987. Freshwater inflow requirements of a Texas estuary. *Coastal Zone 1987*. WW Div./ASCE, Seattle Washington, 26-29 May 1987: 15 p.

Montagna, P.A., R.D. Kalke, and C. Ritter. 2002. Effect of Restored Freshwater Inflow on Macrofauna and Meiofauna in Upper Rincon Bayou, Texas, USA. *Estuaries* 25:1436–1447.

Montagna, P. A., E. M. Hill and B. Moulton. 2009. Role of science-based and adaptive management in allocating environmental flows to the Nueces Estuary, Texas, USA. In: Brebbia, C.A. and E. Tiezzi (eds.), *Ecosystems and Sustainable Development VII*, WIT Press, Southampton, UK, pp. 559-570.

National Weather Service. 2016. <http://w2.weather.gov/climate/index.php?wfo=crp>.

Nielsen-Gammon, J. W. 2012. The 2011 Texas Drought. *Texas Water Journal* 3(1): 59-95.

Nueces River Authority. 2019. <http://www.nueces-ra.org/CP/CITY/day.php>

Nueces River and Corpus Christi and Baffin Bays Basin and Bay Expert Science Team (BBEST). 2011. Environmental Flows Recommendations Report. Final Submission to the Environmental Flows Advisory Group, Nueces River and Corpus Christi and Baffin Bays Basin and Bay Area Stakeholder Committee, and Texas Commission on Environmental Quality, 285 pp.

Nueces River and Corpus Christi and Baffin Bays Basin and Bay Area Stakeholder Committee (BBASC).2012. Environmental Flow Standards and Strategies Recommendations Report.Final Submission to the Environmental Flows Advisory Group, and Texas Commission on Environmental Quality, 112 pp.

Palmer, T.E., P.A. Montagna, and R.D. Kalke, 2002.Downstream effects of restored freshwater inflow to Rincon Bayou, Nueces Delta, Texas, USA.Estuaries 25pp. 1448-1456.

Pulich Jr., W. J. Tolan, W. Y. Lee, and W. Alvis.2002. Final Report. Freshwater inflow recommendation for the Nueces Estuary. Texas Parks and Wildlife Department. Austin, Texas. 69 pp.

Texas Commission on Environmental Quality (TCEQ). 1995. Agreed Order Establishing Operational Procedures Pertaining to Special Condition B, Certificate of Adjudication No. 21-3214, Held by City of Corpus Christi et al., April 28, 1995.

Whitledge T. E. and D. A. Stockwell. 1995. The effects of mandated freshwater releases on the nutrient and pigment environment in Nueces Bay and Rincon Delta: 1990–1994. In: Jensen R, editor. Proceedings of the 24th Water for Texas Conference. 1995 Jan 26-27; Austin. College Station (TX): Texas Water Resources Institute. p. 47-51.