



# **Violet Andrews Park Shoreline Improvements**

Summary Report

Project Number – 2315  
October 2023

Prepared by:

Kathleen Weisenberger, Assistant City Manager  
City of Portland  
1900 Billy G. Webb  
Portland, Texas 78374  
(361) 777-4517

Submitted to:

**Coastal Bend Bays & Estuaries Program**  
1305 N. Shoreline Blvd, Suite 205  
Corpus Christi, TX 78401

The views expressed herein are those of the authors and do not necessarily reflect the views of CBBEP or other organizations that may have provided funding for this project.

# **Summary Report for:**

## **Violet Andrews Park Shoreline Improvements**

### **CBBEP # 2315**

#### **Background/Objective**

Violet Andrews Park is often cited as one of the top ten locations in the nation, and one of the best in the world, for kiteboarding. This is due in large part to the shallow, sandy, bottom which allows easy access to kite boarders to walk out into the water. Currently, to access the water the public must walk across several feet of dangerous riprap. This is especially dangerous for children, and kite-boarders who are often barefoot and carrying bulky equipment. Aside from kiteboarding, many other recreational activities, such as fishing and birding, occur within the park, and it is a popular attraction in the City of Portland.

The City of Portland engaged ANCHOR QEA LLC, an engineering firm, to conduct feasibility, planning, and design for improvements to the entry-point and surrounding shoreline. Improvements currently under consideration include removal of riprap, addition of path to water and directional signage, and review of any additional recommendations emerging from study. Actual construction and implementation of recommendations would be conducted as part of a later stage of the project. Benefits of undertaking this project include enhanced public access for tourism and recreational activity, focus of recreational activity to this designated location which in turn decreases the intrusion and impacts to other shoreline areas, and review of shoreline management.

#### **Project Area**

Violet Andrews Park is located at 305 Wildcat Dr. in Portland, Texas (Fig. 1). The park consists of 10 acres situated on the northern shoreline of Corpus Christi Bay and is bordered by apartments to the west and single-family homes to the north and east (Fig. 2). The park includes approximately 1,300 linear feet of shoreline and is a popular year-round destination. The boundaries of Violet Andrews Park are shown in Figure 3. Park amenities include a covered picnic area, showers, two parking lots, a playground, benches, drinking fountains, and a 0.2-mile paved pedestrian pathway.

The park is located on a bluff overlooking Corpus Christi Bay to the south and contains a mosaic of native vegetation and invasive plant species. There are two on-site parking areas with overhead lighting and bollards that are connected by a .21-mile paved walkway. The shoreline consists largely of rock and concrete debris, originating from past demolished roadways, placed there to reduce shoreline erosion. While the placement of this material has been successful in reducing erosion to some degree, the material makes it dangerous to recreational users when entering/exiting the water.

Figure 1. Location of Violet Andrews Park in Portland Texas

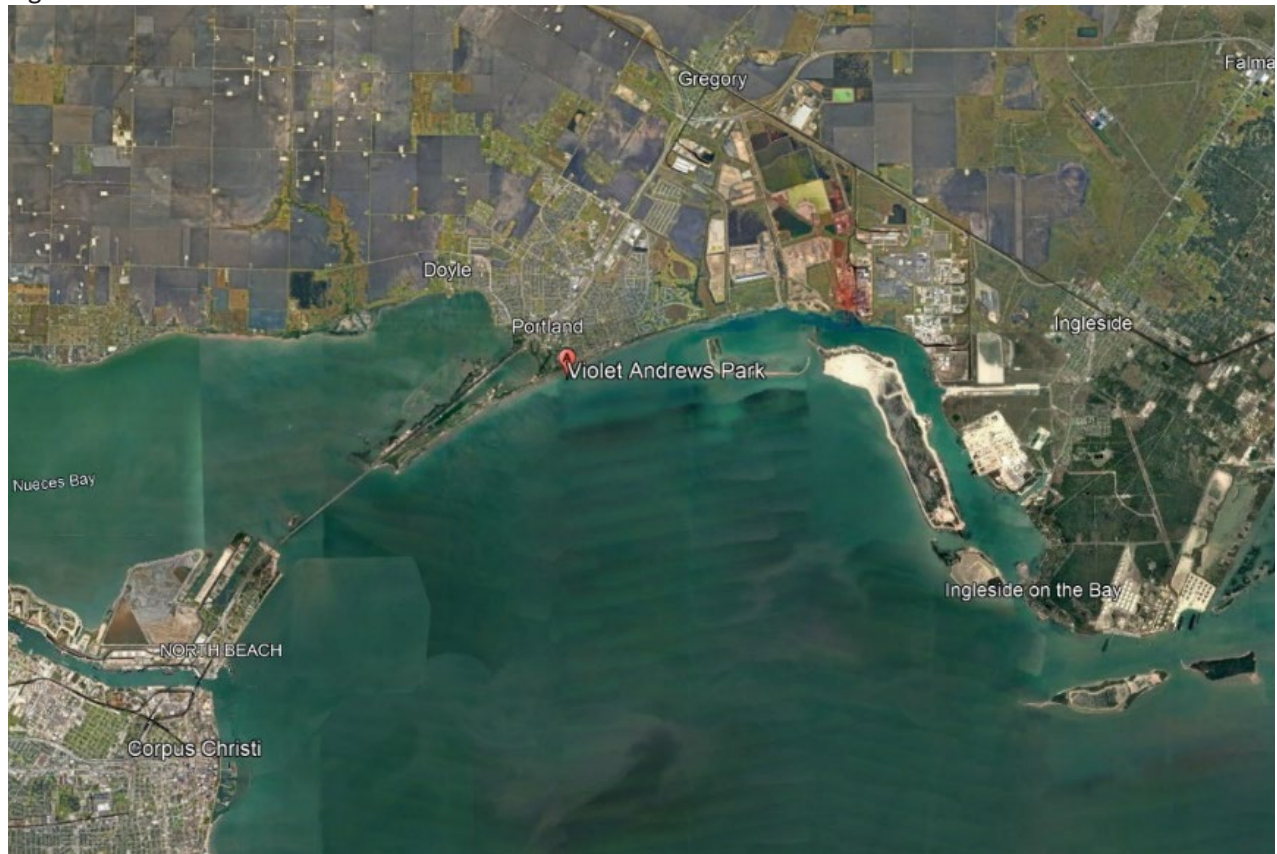
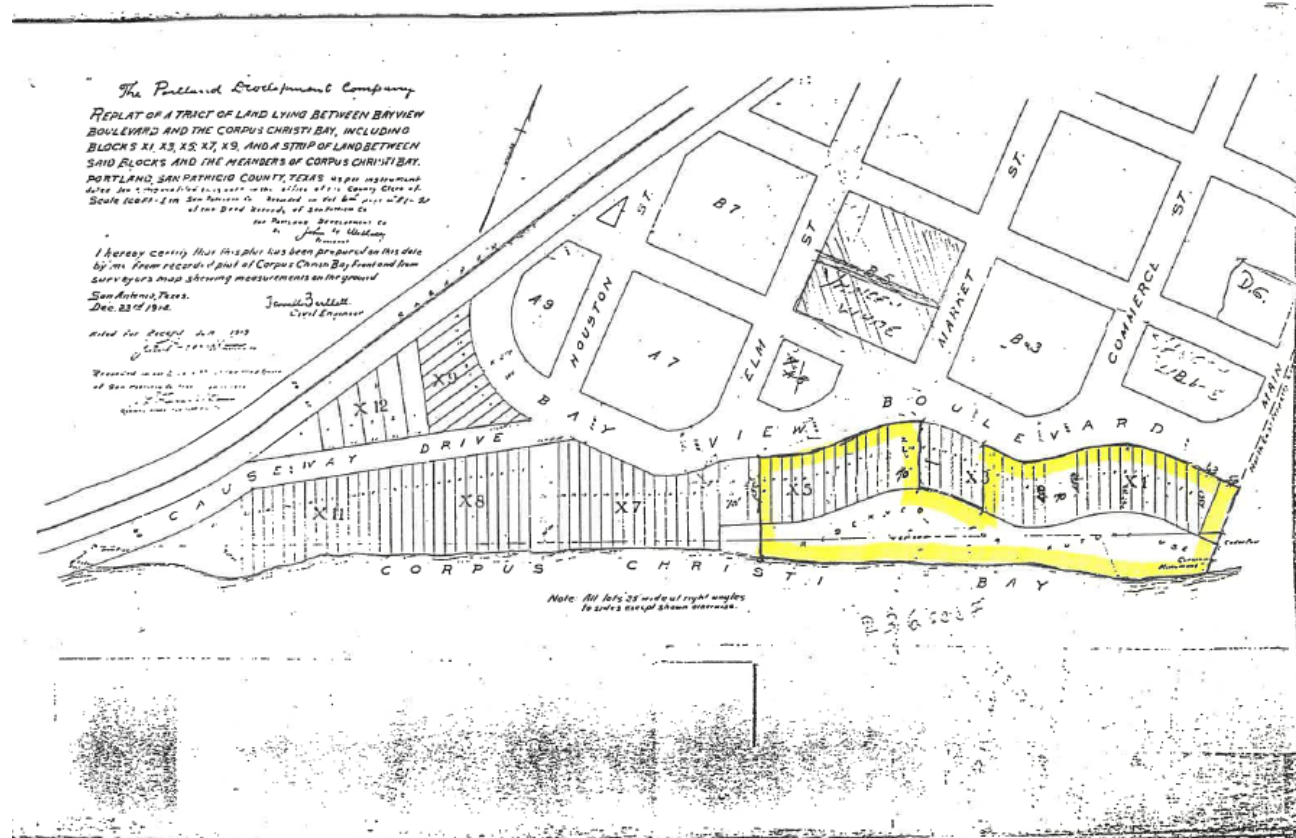


Figure 2. Violet Andrews Park in Portland Texas





Figure 3. Violet Andrews Park Boundaries



### **Conceptual Design Feasibility Report**

The City of Portland engaged ANCHOR QEA, LLC to conduct feasibility, planning, and design for improvements to the entry point and surrounding shoreline at Violet Andrews Park in Portland, TX. This was accomplished through a thorough review of existing documentation provided by the City of Portland and publicly accessible documents, as well as a series of stakeholder meetings to capture public sentiment towards the overall project goals.

As a result of this process, a feasibility report was produced by ANCHOR QEA, LLC and provided to the City of Portland. The following design criteria were utilized to create conceptual designs alternatives for improvements to the park: public access and circulation, kiteboarder access, maximizing the natural setting, maximizing recreational opportunities, improved safety, and project feasibility. After considering these criteria, a final feasibility report was provided by ANCHOR QEA, LLC containing four conceptual design alternatives for improving Violet Andrews Park and for making it more accessible to the various user groups who utilize the park for recreation. Of the four design alternatives provided in the feasibility report, two focused on recreation and two focused on restoration. The City of Portland ultimately identified a preferred conceptual design that blends multiple conceptual designs to include aspects of both recreation and restoration. A copy of the Conceptual Design Feasibility Report, produced by ANCHOR QEA, LLC was provided to CBBEP by the City of Portland and serves as the Feasibility Analysis deliverable as required per the project contract.