



September 2018

## Coastal Bend Bays & Estuaries Program Receives Grant for Brazilian Peppertree Removal

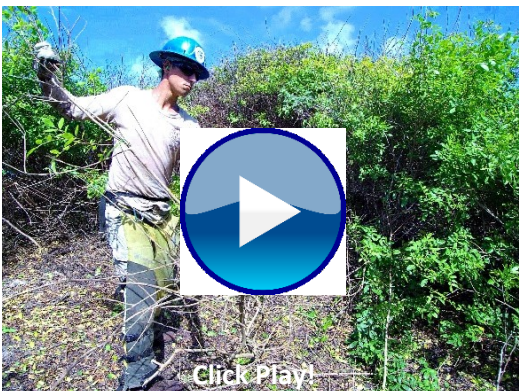
by Kathryn Tunnell



The fight against the invasive Brazilian peppertree (*Schinus terebinthifolius*) in the Coastal Bend rages on! This year the Coastal Bend Bays & Estuaries Program (CBBEP) received a General Land Office Coastal Management Program (CMP) grant to address the problematic species in IB Magee Beach Park and a small portion of University of Texas Marine Science Institute property in Port Aransas. CBBEP has been working throughout the summer with partners to rid the area of this invasive species which chokes out native vegetation and wreaks havoc on ecosystems.



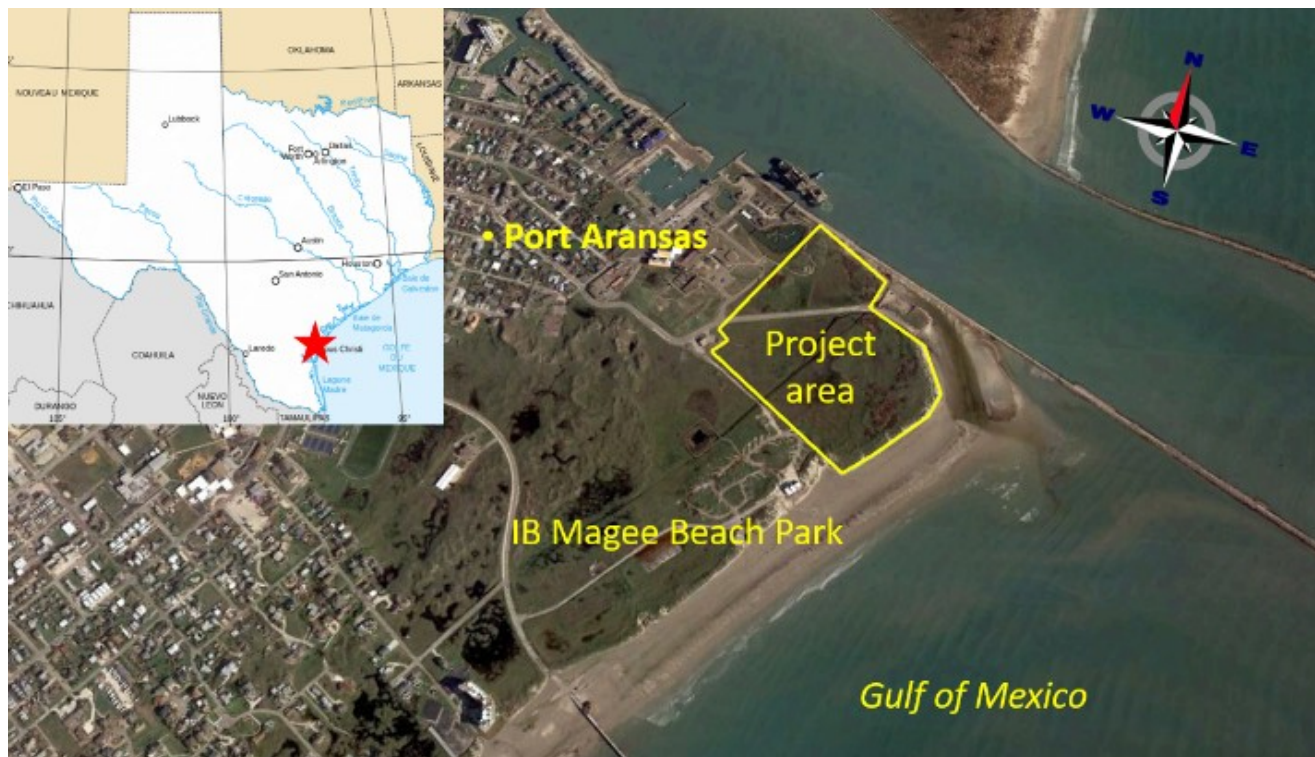
The \$30,000 CMP grant and matching funds from the CBBEP (\$5,000) and Nueces County Coastal Parks (\$5,000) are being used to remove Brazilian peppertree in 30 acres of dune habitat through a combination of cutting, treating with herbicide and follow-up treatments to address re-growth. In addition, the funding will support a Texas Gulf Region Cooperative Weed Management Area (TGR-CWMA) Coordinator. The TGR-CWMA works tirelessly to address invasive Brazilian peppertree from Port O'Connor to Packery Channel on the Texas Gulf Coast, and seeks to prevent the spread and movement of the undesirable species. CBBEP is working in coordination with TGR-CWMA on the project and has contracted with the American Conservation Experience (ACE) to get the job done.



Because of the location of the peppertrees in the sand dunes, and not wanting to damage sensitive habitats and dune infrastructure during the treatment process, ACE is doing everything by hand. This makes for very hard, time and labor intensive work. Access is often difficult, and maneuvering in the dense thickets is made more cumbersome with equipment and supplies. Click the video to the left take a walk through the dense peppertree thickets and see ACE in action.

The team did their initial treatment this summer, with follow-up treatments scheduled for October and December. The follow-ups will assess re-sprouting and new seedlings, which are then treated with herbicide. “We are excited to see so much progress being made towards the restoration of the dune habitats in the project area, and are optimistic that the native dune vegetation will begin to reestablish once the peppertree is no longer a challenge,” said Rosario Martinez, project manager with the CBBEP.

Species like Brazilian peppertree can take over the landscape with devastating consequences, and persistence is key with the treatment of this species. Thanks to the strong leadership of the TGR-CWMA, and the support of partners, we have a fighting chance.



To learn more about the TGR-CWMA visit <http://www.texasinvasives.org/professionals/gulfregion.php>.

To learn more about the efforts of the CBBEP visit [www.cbbep.org](http://www.cbbep.org)

The Coastal Bend Bays & Estuaries Program is a non-profit organization dedicated to protecting and restoring bays and estuaries in the 12-county region of the Texas Coastal Bend. For more information about the Coastal Bend Bays & Estuaries Program, contact Kathryn Tunnell at (361)336-0311 or [ktunnell@cbbep.org](mailto:ktunnell@cbbep.org). This report published in September 2018.

[www.cbbep.org](http://www.cbbep.org)

[www.facebook.com/CBBEP](https://www.facebook.com/CBBEP)

